

Premium Booth 6mW x 3mD Left Corner Booth

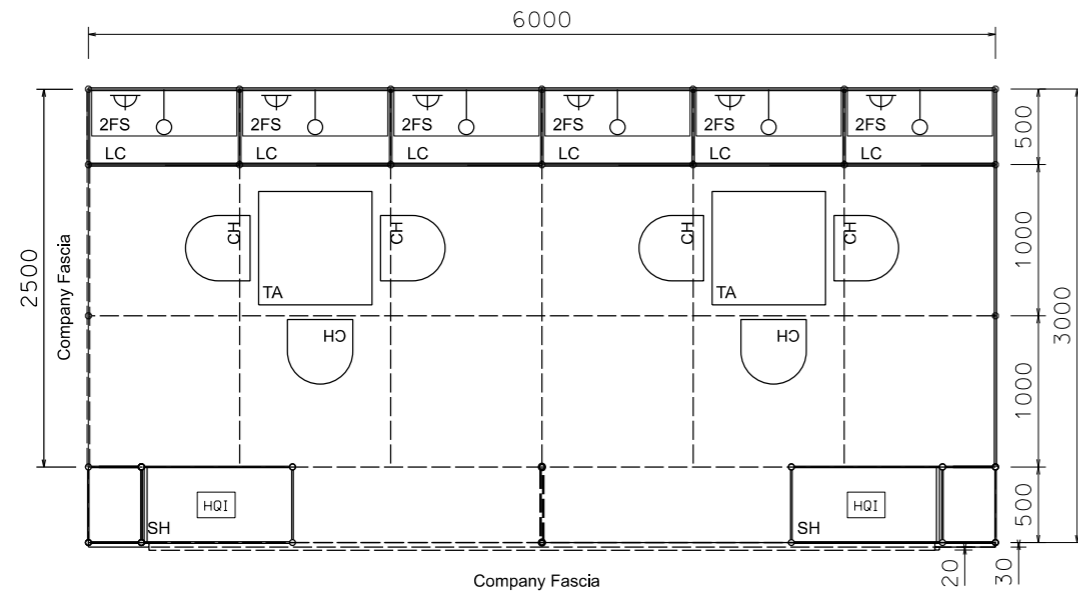
LT-B-18-L_Cnr
6mW x 3mD x 3.5mH

Wooden plywd company fascia in spray painted fin.
-Pantone #2603C
-Company name in white

System side panel w/. grey sticker (OR 072) fin.



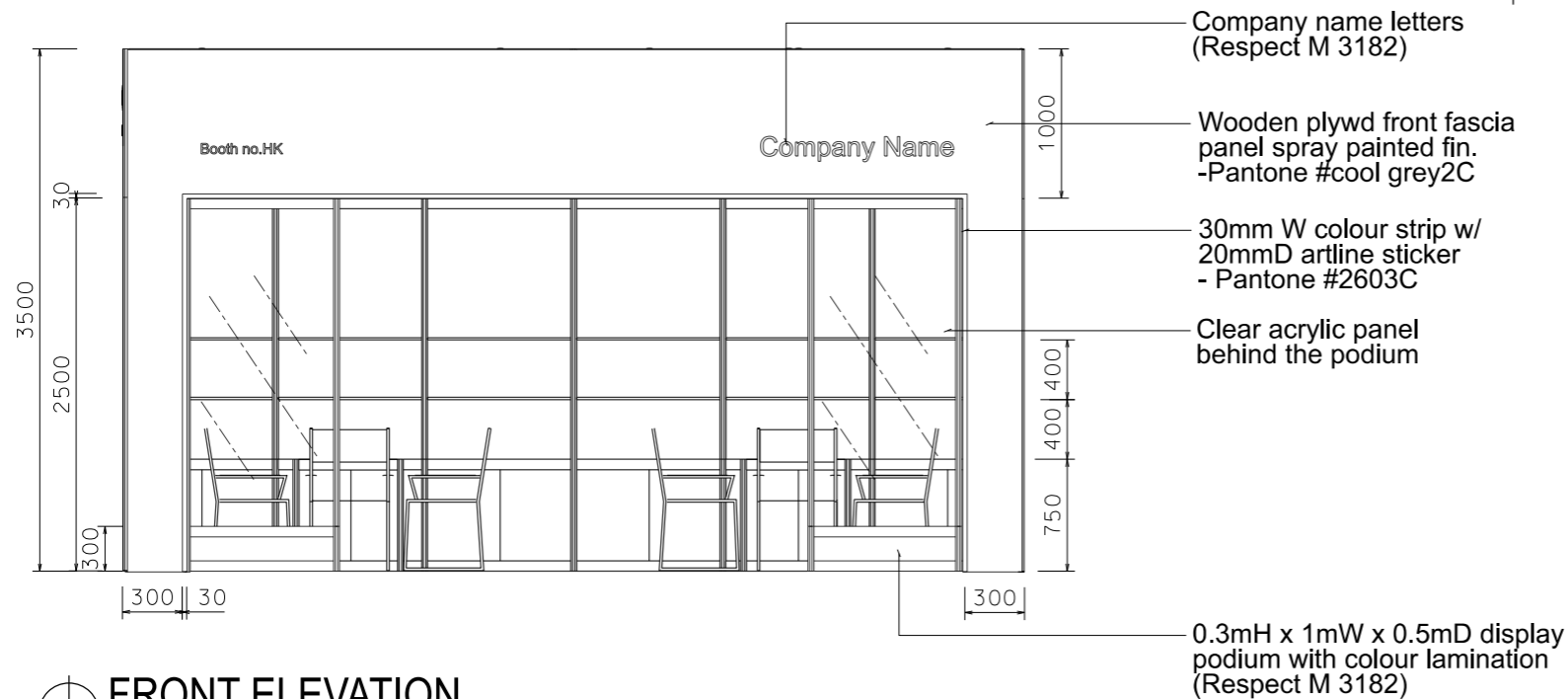
COLOUR PERSPECTIVE N.T.S



PLAN



PERSPECTIVE N.T.S



FRONT ELEVATION

BOOTH SPECIFICATION		QTY
	Front display podium (1mW x 0.3mH) with clear acrylic back panel in colour sticker lamination w/. 1 x HQ1 white light	2
	Lockable cabinet (1mL x 0.5mD x 0.75mH)	6
	Wooden shelf (flat) (1mL x 0.3mD)	12
	Square meeting table (0.7m X0.7m x 0.75mH)	2
	Black leather chair	6
	Longarmed spotlight w/13 watt LED lamp (yellow) set at 3.5mH	6
	800w Square pin power socket	6
	Ceiling grid (175mmH) set at 3.5mH	30.5m

FILE PATH - L:\Local Fair Premium Booth 2011\LT\13W Lamp\LT-B layout\LT-B-2d.layout_update.dgn

 HTDC 香港貿易局	NOTES UNLESS OTHERWISE SPECIFIED ALL DIMENSIONS ARE IN MM.	REVISION 23/02/2010 13/04/2011 16-10-2013 06/02/2014 12-07-2019	DATE: 12-07-2019	TITLE Premium Booth LT-B-18 L Corner	PROJECT PREMIUM BOOTH 6m x 3m L Corner DATE: XXXXXXXX	SHEET LT-B026
	SCALE: 1 : 50 (A3)			
.....	CHECKED BY: